

CONDUCTIVE POLYMER ALUMINUM SOL I CAPCAITORS

UER series

FEATURES 特性

- Low E.S.R
低阻抗
- High ripple current
高紋波
- Guaranteed at 105°C 5000 hours.
保證壽命 105°C 5000 小時

SPECIFICATIONS

Item 項目	Performance Characteristics 特性		
Operating Temperature Range 工作溫度範圍	-55°C ~ +105°C		
Rated Voltage Range 額定電壓範圍	2.5~35W.V.		
Capacitance Range 靜電容量範圍	10~3300uF		
Capacitance Tolerance 靜電容量誤差	±20% (20°C, 120Hz)		
Leakage Current 洩漏電流	$I \leq 0.2CV$ or 280(μA) whichever is greater. (After 2 minutes) $\leq 0.2CV$ or 280 μA 取較大值. (2 分鐘後) I =Leakage Current(μA) C =Nominal Capacitance(μF) V =Rated Voltage(V) I =洩漏電流(μA) , C =額定容量(μF) , V =額定電壓(V)		
Dissipation Factor ($\tan \delta$) 散逸因素 (損失角正切值)	Rated Voltage 額定電壓 (V dc)	2.5~35	MAX (20°C 120Hz)
	Tan δ	0.10	
Temperature Characteristics Impedance Ratio 溫度特性 阻抗變化率	Z(-55°C)/Z(+20°C)	≤ 1.25	100KHZ
	Z(+105°C)/Z(+20°C)	≤ 1.25	

CONDUCTIVE POLYMER ALUMINUM SOL ICAPCAITORS

※1. Endurance 壽命	The following specifications shall be satisfied when the capacitors are restored 20°C after the rated voltage is applied for 5,000 hours at 105°C 電容在 105°C 下印加額定電壓 5000 小時, 放置在 20°C 的環境下, 電容需符合以下規格值.	
	Capacitance Change 容量變化率	Within ±20% of the initial value. 初始值±20%以內
	Dissipation Factor 散逸因素	Not more than 150% of the specified value 不超出規格值的 1.5 倍
	Leakage Current 洩漏電流	Not more than the specified value 不超出規格值
Damp heat 耐濕性	60°C, 90 to 95%, R.H, 1000hrs	
	Capacitance Change 容量變化率	Within ±20% of the initial value. 初始值±20%以內
	Dissipation Factor 散逸因素	Not more than 150% of the specified value 不超出規格值的 1.5 倍
	Leakage Current 洩漏電流	Not more than the specified value 不超出規格值
Surge Voltage(V) 湧浪電壓(V)	At normal temperature, charge at surge voltage for 30sec and discharge via a 1kΩ protective resistor for 330sec. Repeat for 1000 cycles. 常溫下, 印加湧浪電壓充電 30 秒, 通過 1 kΩ 的保護電阻放電 330 秒, 循環 1000 次。	
	△C/C: Within ±20% of the initial measured value. 初始值±20%以內	
	tanδ: ≤150% of initial specified value 不超出規格值的 1.5 倍	
	ESR: ≤150% of initial specified value 不超出規格值的 1.5 倍	
		LC: ≤ initial specified value 不超出規格值

※ 1. In case of some problems for measured values, measure after applying rated voltage for 120 minutes at 105°C.

1. 如測試數據時遇到問題, 請在 105°C 下印加額定電壓 120 分鐘後再測試。

MULTIPLIER FOR RIPPLE CURRENT

Frequency coefficient for ripple current

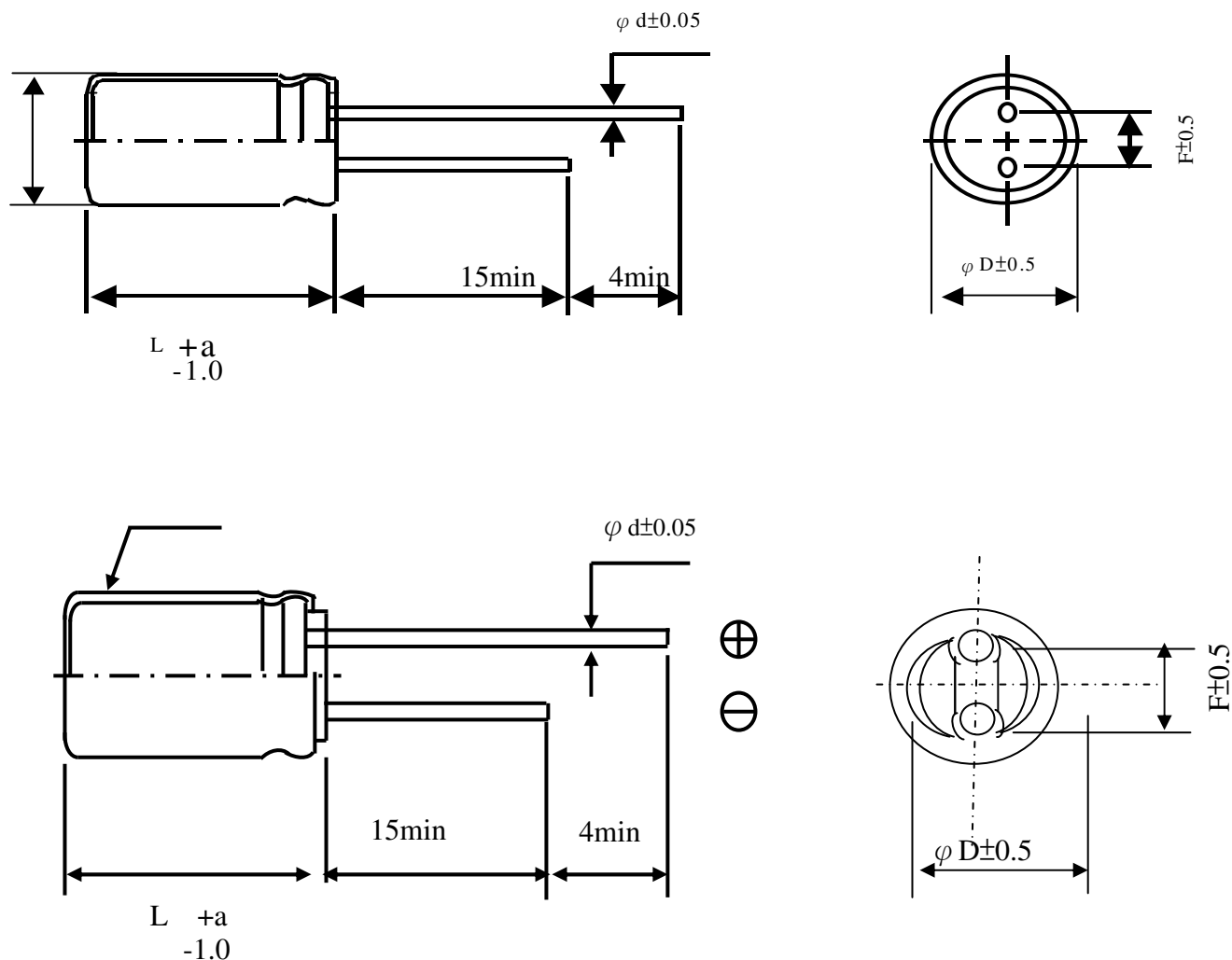
紋波電流頻率系數

Frequency (HZ)	120 ≤ f < 1K	1K ≤ f < 10K	10K ≤ f < 100K	100K ≤ f ≤ 500K
Coefficient	0.05	0.30	0.70	1.00

CONDUCTIVE POLYMER ALUMINUM SOLI CAPACITORS

UER series

DIMENSIONS 尺寸 (mm)



$\varphi \times L$	6.3x5	6.3x6	6.3x7	6.3x8	6.3x11	8x8	8x11.5	10x12.5
$F \pm 0.5$	2.5	2.5	2.5	2.5	2.5	3.5	3.5	5.0
φd	0.45	0.45	0.45	0.6	0.6	0.6	0.6	0.6
a	$L < 11; a = 1.0; L \geq ; a = 1.5$							

CONDUCTIVE POLYMER ALUMINUM SOLICAPCAITORS

STANDARD SIZE

ϕ Dx L(mm)

Rated Voltage(V)	Cap(uF)	Case size	ESR(m Ω)(max) 100KHz to 300KHz at 20 $^{\circ}$ C	Rated Ripple Current 100KHz (mA rms at 105 $^{\circ}$ C)	Tangent of Loss Angle (% max)	Leakage Current (uA)(max) after 2 minutes
2.5	330	5x6	20	4000	10	280
2.5	390	6.3x6	12	4000	10	280
2.5	470	6.3x8	10	4500	10	280
2.5	560	6.3x6	12	4450	10	280
2.5	560	5x8	12	4350	10	280
2.5	680	6.3x7	10	4350	10	340
2.5	680	8x6.5	7	4350	10	340
2.5	820	6.3x8	7	5600	10	410
2.5	820	8x7	7	5600	10	410
2.5	820	8x8	7	5600	10	410
2.5	1200	8x8	7	6160	10	600
2.5	1500	8x12	7	6770	10	750
4	560	6.3x8	7	4500	10	448
4	560	8x8	7	4500	10	448
4	1200	8x8	7	4950	10	960
4	2700	10x12.5	7	5440	10	2160
6.3	22	5x6	40	1800	10	280
6.3	47	6.3x6	30	1980	10	280
6.3	100	5x7	40	2500	10	280
6.3	100	6.3x5.5	30	2580	10	280
6.3	100	6.3x6	30	2580	10	280
6.3	220	5x7	40	2650	10	280
6.3	220	6.3x4.2	30	2650	10	280
6.3	270	5x7	40	2730	10	340
6.3	270	5.5x7	30	2730	10	340
6.3	270	6.3x8	25	2730	10	340
6.3	330	5x8	20	2800	10	415
6.3	330	5.5x8	20	2800	10	415
6.3	330	6.3x5.5	15	2800	10	415
6.3	330	8x8	8	2800	10	415
6.3	390	5x9	12	2800	10	491
6.3	450	6.3x6	10	3060	10	567
6.3	470	5x9.5	10	3540	10	592
6.3	470	5.5x10	10	3540	10	592
6.3	470	6.3x6.1	10	3540	10	592
6.3	470	6.3x8	10	4500	10	592
6.3	470	8x8	8	4000	10	592
6.3	500	5x9	12	4350	10	630
6.3	560	5.5x8	12	4700	10	706
6.3	560	6.3x7	10	4700	10	706
6.3	560	6.3x8	8	4700	10	706
6.3	560	8x8	8	4800	10	706
6.3	680	5.5x10	10	4850	10	856
6.3	680	6.3x11	8	4850	10	856

CONDUCTIVE POLYMER ALUMINUM SOL ICAPCAITORS

Rated Voltage(V)	Cap(uF)	Case size	ESR(mΩ)(max) 100KHz to 300KHz at 20°C	Rated Ripple Current 100KHz (mA rms at 105°C)	Tangent of Loss Angle (% max)	Leakage Current (uA)(max) after 2 minutes
6.3	680	8x8	8	4850	10	856
6.3	680	10x12.5	8	4850	10	856
6.3	820	5x10	10	4960	10	1033
6.3	820	5.5x10	10	4960	10	1033
6.3	820	6.3x8.5	8	4960	10	1033
6.3	820	8x8	8	4960	10	1033
6.3	820	10x12.5	8	4960	10	1033
6.3	1000	6.3x10	8	5000	10	1260
6.3	1000	8x7	8	5000	10	1260
6.3	1200	6.3x13	8	5050	10	1512
6.3	1200	8x8	8	5050	10	1512
6.3	1500	8x9	8	5070	10	1890
6.3	1500	10x10	8	5070	10	1890
6.3	1800	10x12.5	8	5070	10	2268
6.3	1900	8x11.5	8	5075	10	2394
6.3	2200	10x12.5	8	5450	10	2772
6.3	2500	8x16	8	6100	10	3150
6.3	2500	10x12.5	7	6100	10	3150
6.3	3300	10x15	8	6300	10	4158
6.8	470	5x9	15	2000	10	592
6.8	680	6.3x8	8	2050	10	924
6.8	820	6.3x7.5	8	2100	10	1115
7	150	5x6	12	2100	10	280
7	330	5x9	12	2125	10	462
7	820	6.3x10	8	2250	10	1148
7	820	8x8	8	2250	10	1148
7.5	270	5x8	15	2500	10	405
7.5	270	6.3x8	8	2500	10	405
7.5	330	5x9	12	3100	10	495
7.5	330	6.3x8	8	3100	10	495
7.5	390	5.5x9	12	3020	10	585
7.5	470	5.5x9	12	3050	10	705
7.5	470	6.3x6.5	8	3050	10	705
7.5	500	5x8.5	12	3100	10	750
7.5	500	5.5x8.5	12	3100	10	750
7.5	680	6.3x8.5	10	3500	10	1020
7.5	820	6.3x10	10	4200	10	1230
7.5	820	8x8	8	4200	10	1230
7.5	1000	6.3x11	8	4320	10	1500
7.5	1000	8x11.5	8	4320	10	1500
7.5	1200	6.3x13	8	4450	10	1800
7.5	1200	8x11.5	8	4450	10	1800
10	47	6.3x6	12	1700	10	280
10	100	5x9	15	1980	10	280
10	120	6.3x6	12	2210	10	240
10	150	6.3x11	10	2550	10	300
10	220	5x11	10	2830	10	440

CONDUCTIVE POLYMER ALUMINUM SOL ICAPCAITORS

Rated Voltage(V)	Cap(uF)	Case size	ESR(mΩ)(max) 100KHz to 300KHz at 20°C	Rated Ripple Current 100KHz (mA rms at 105°C)	Tangent of Loss Angle (% max)	Leakage Current (uA)(max) after 2 minutes
10	220	6.3x7	12	2830	10	440
10	270	6.3x8	12	2830	10	540
10	330	6.3x8	12	2900	10	660
10	330	8x8	8	2900	10	660
10	470	6.3x8.5	10	3350	10	940
10	470	8x8	8	3350	10	940
10	560	8x8	8	3850	10	1120
10	560	10x12.5	8	3850	10	1120
10	680	6.3x11	10	4210	10	1360
10	680	8x7	8	4210	10	1360
10	680	10x12.5	8	4210	10	1360
10	820	6.3x13	8	4500	10	1640
10	820	8x11.5	8	4500	10	1640
10	1000	8x11.5	8	4850	10	2000
10	1000	10x12.5	8	4850	10	2000
10	1200	10x12.5	8	5000	10	2400
10	1500	8x13	8	5120	10	3000
10	1500	10x12.5	8	5120	10	3000
10	2200	10x16	8	5500	10	4400
12	330	5x9	15	2500	10	792
12	330	5.5x9	15	2500	10	792
12	330	6.3x11	10	2500	10	792
12	470	5.5x10	15	2750	10	1128
12	560	5.5x10	15	2750	10	1344
12	560	6.3x9	10	2750	10	1344
12	680	6.3x11	8	3025	10	1632
12	820	6.3x13	8	3320	10	1968
14	560	6.3x9	8	2800	10	1568
14	680	6.3x13	8	3080	10	1904
16	22	5x6	45	1230	10	280
16	22	6.3x6	40	1500	10	280
16	39	6.3x6	40	1650	10	280
16	47	6.3x4.5	40	1810	10	280
16	56	8x11.5	24	1900	10	280
16	68	6.3x6	40	2090	10	280
16	100	5x7	45	2490	10	320
16	100	5.5x7	45	2490	10	320
16	100	6.3x5	24	2490	10	320
16	100	6.3x7	24	2490	10	320
16	100	6.3x8	24	2820	10	320
16	100	10x12	12	2820	10	320
16	150	6.3x5	24	3190	10	480
16	180	6.3x7	24	3560	10	576
16	180	8x11.5	15	3560	10	576
16	220	6.3x8	24	4300	10	704
16	220	8x8	18	4300	10	704
16	220	8x11.5	15	4300	10	704

CONDUCTIVE POLYMER ALUMINUM SOLICAPCAITORS

Rated Voltage(V)	Cap(uF)	Case size	ESR(mΩ)(max) 100KHz to 300KHz at 20°C	Rated Ripple Current 100KHz (mA rms at 105°C)	Tangent of Loss Angle (% max)	Leakage Current (uA)(max) after 2 minutes
16	270	5.5x9	24	500	10	864
16	270	6.3x8	24	500	10	864
16	270	8x8	12	5000	10	864
16	270	8x11.5	10	5000	10	864
16	270	10x12.5	8	5000	10	864
16	330	5.5x9	18	5000	10	1056
16	330	6.3x9	15	5000	10	1056
16	330	8x7	12	5000	10	1056
16	330	8x11.5	10	5000	10	1056
16	330	10x12.5	10	5200	10	1056
16	470	5.5x10.5	15	5400	10	1504
16	470	6.3x11	12	5400	10	1504
16	470	8x8	12	5400	10	1504
16	470	8x11.5	11	5400	10	1504
16	470	10x9	11	5500	10	1504
16	470	10x12.5	11	5600	10	1504
16	560	6.3x10	12	5400	10	1792
16	560	8x8	12	5450	10	1792
16	560	10x10	11	5600	10	1792
16	680	8x11.5	11	5600	10	2176
16	680	10x10	12	5500	10	2176
16	820	8x11.5	12	5400	10	2624
16	820	10x9	11	5400	10	2624
16	1000	8x16	12	5600	10	3200
16	1000	10x11.5	11	5600	10	3200
16	1000	10x12.5	11	5600	10	3200
16	1500	8x20	12	6100	10	4800
16	1500	10x16	10	6100	10	4800
20	10	5x6	45	2100	10	280
20	33	6.3x8	30	2500	10	280
20	47	8x8	25	2750	10	280
20	68	6.3x8	30	2900	10	280
20	100	8x12	25	3350	10	400
20	150	10x12.5	30	3500	10	600
20	180	8x8	25	3810	10	720
20	330	8x11.5	25	4230	10	1320
20	390	8x11.5	18	4520	10	1560
20	470	8x11.5	25	4300	10	1880
20	560	10x12.5	30	3350	10	2240
20	680	8x16	25	3100	10	2720
20	680	10x11.5	30	3100	10	2720
20	820	8x16	25	2930	10	3280
20	1000	10x16	30	3100	10	4000
25	10	6.3x6	45	1550	10	280
25	22	5x8	45	1630	10	280
25	22	6.3x6	45	1630	10	280
25	33	6.3x8	56	1850	10	280



CONDUCTIVE POLYMER ALUMINUM SOLICAPCAITORS

Rated Voltage(V)	Cap(uF)	Case size	ESR(mΩ)(max) 100KHz to 300KHz at 20°C	Rated Ripple Current 100KHz (mA rms at 105°C)	Tangent of Loss Angle (% max)	Leakage Current (uA)(max) after 2 minutes
25	33	8x8	40	1850	10	280
25	47	5x8	45	2000	10	280
25	47	6.3x6	45	2000	10	280
25	47	8x8	40	2000	10	280
25	56	8x8	40	2280	10	280
25	68	6.3x6	40	2450	10	340
25	100	6.3x8	40	2600	10	500
25	100	8x11.5	38	2600	10	500
25	100	10x12.5	30	2700	10	500
25	120	10x12.5	30	2700	10	600
25	150	6.3x11	40	2600	10	750
25	150	10x12.5	30	2700	10	750
25	180	8x11.5	38	2600	10	900
25	180	10x12.5	30	2700	10	900
25	220	8x11.5	38	2600	10	1100
25	220	10x12.5	30	2700	10	1100
25	270	8x11.5	38	3100	10	1350
25	270	10x12.5	30	3100	10	1350
25	330	8x11.5	35	3100	10	1650
25	330	10x10	30	3100	10	1650
25	390	10x12.5	30	3200	10	1950
25	470	8x11.5	35	2750	10	2350
25	470	10x12	30	3400	10	2350
25	560	8x16	35	3600	10	2800
25	560	10x12.5	30	3600	10	2800
25	680	8x15.5	35	3810	10	3400
25	680	10x12.5	25	3810	10	3400
25	820	10x16	20	4225	10	4100
25	1000	10x16	20	5050	10	5000
35	10	6.3x8	50	2300	10	280
35	22	6.3x7	50	2400	10	28
35	33	6.3x6	50	2570	10	280
35	33	8x8	45	2570	10	280
35	35	8x8	45	2650	10	280
35	47	6.3x6	50	2720	10	329
35	47	8x8	45	2720	10	329
35	68	6.3x8	45	2800	10	476
35	68	8x8	45	2800	10	476
35	100	6.3x9	50	2950	10	700
35	100	8x8	45	2950	10	700
35	120	10x12.5	40	3030	10	840
35	220	8x11.5	45	3120	10	1540